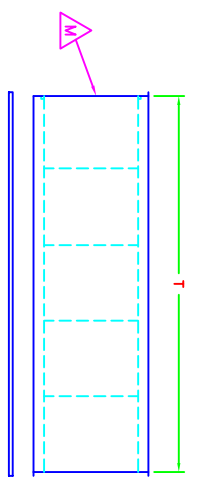
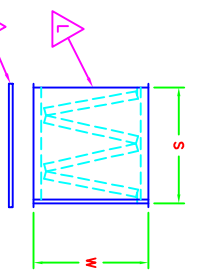
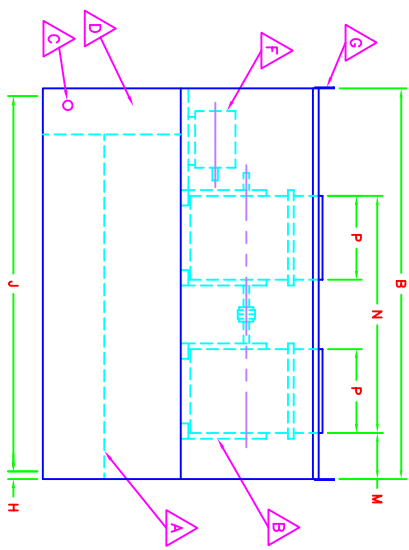
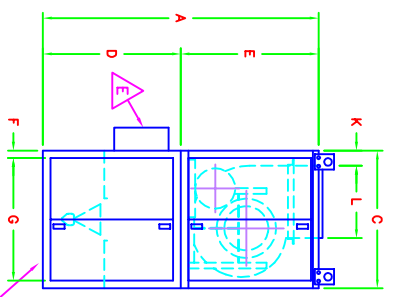
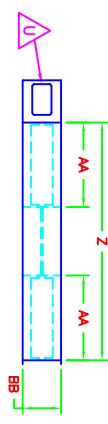
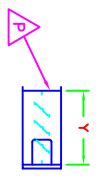


CASING	A	B	C	D	E	F	G	H	J	K	L	M	N	P	S	T	W	X	Y	Z	AA	BB	F-A, FILTER CAPACITY
222	100	146	50	50	50	1.25	47.38	1.25	143.38	8.75	27.25	14.75	77.00	27.00	43.25	142.50	32	-	27.75	77.25	27.25	10	(16)20"x25" & (16)16"x25"
225	100	146	50	50	50	1.25	47.38	1.25	143.38	3.5	31.50	14.75	88.00	31.50	43.25	142.50	32	-	31.75	88.25	31.75	10	(16)20"x25" & (16)16"x25"
227	110	156	60	50	60	1.75	56.5	1.75	152.5	9	34.5	16.25	96	34.5	53.25	151.5	32	-	34.75	96.25	34.75	10	(30)20"x25" & (10)16"x25"
230	110	156	60	50	60	1.75	56.5	1.75	152.5	4.5	37	16.25	104	37	53.25	151.5	32	-	37.25	104.25	37.25	10	(30)20"x25" & (10)16"x25"
233	128	191	70	58	70	1.75	66.50	1.75	187.50	10.50	43.25	19.75	116.00	39.81	63.63	186.13	32	-	43.50	116.25	40.06	10	(20)16"x25" & (30)20"x25"
236	128	191	70	58	70	1.75	66.50	1.75	187.50	10.50	43.25	19.75	122.00	42.81	63.63	186.13	32	-	43.50	122.25	43.06	10	(20)16"x25" & (30)20"x25"



- ▲ A BURNER PROFILE
- ▲ B TWIN FC DWDI BLOWERS
- ▲ C GAS CONNECTION
- ▲ D ELEC./MANIFOLD CONTROLS VESTIBULE
- ▲ E MAIN DISCONNECT SWITCH
- ▲ F SUPPLY FAN BLOWER MOTOR
- ▲ G REMOVABLE LIFTING LUG
- ▲ H FRESH AIR INTAKE OPENING
- ▲ K FRESH AIR OPENING INLET SCREEN
- ▲ L FRESH AIR INTAKE FILTER
- ▲ M FRESH AIR INTAKE FILTER SERVICE DOOR
- ▲ P DISCHARGE DAMPER
- ▲ R FRESH AIR FILTER INLET SCREEN
- ▲ U DAMPER MOTOR

NOTES:
 -1" CONNECTION FLANGES SUPPLIED AROUND ALL OPENINGS
 -MODEL 215 BUILT AS SINGLE PIECE UNIT
 -REAR ACCESS DOORS PROVIDED ON ALL SPLIT MODELS
 -EQUIPMENT SUPPORT RECOMMENDED UNDER FRESH AIR INTAKE FILTER
 -ON MODELS 225 AND LARGER
 -SERVICE DOORS SUPPLIED ON BOTH SIDES OF FILTER SECTION ON MODELS 233 & 236

30100061

DRAWING NUMBER: 1900010102

DATE: 02/10/00

TITLE: CFA-222 THRU 236 ARRANGEMENT V1 UP DISCHARGE

REVISIONS:

REV	TITLE	DESCRIPTION	DATE

MATERIAL: 2 PLCS

SCALE: 1 to 1

APPROVED BY: _____

DATE: _____

ECN NO: _____

DWG: _____

DATE: _____

DO NOT SCALE DRAWING USE DIMENSIONS SHOWN

ALL DIMENSIONS ARE IN INCHES UNLESS OTHERWISE SPECIFIED

TOLERANCES:

2 PLCS	±.03
3 PLCS	±.015

REVISIONS: